



## **User Manual**

Wall Switch Z1 Pro

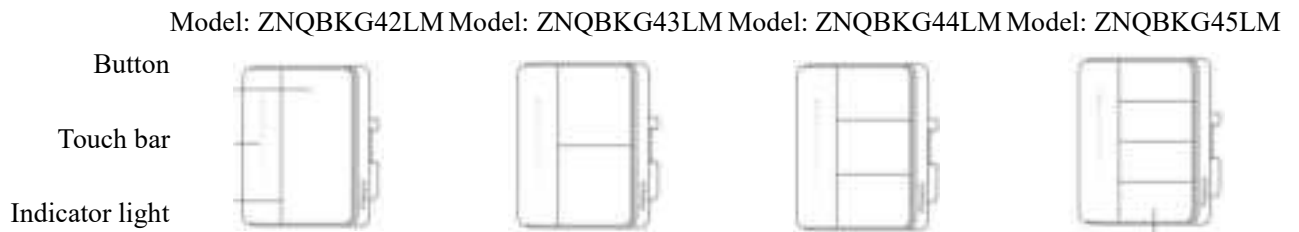
Please read this manual carefully and keep it properly.

## Product Introduction

Aqara Wall Switch Z1 Pro (Single/Double/Triple/**Quadruple** Rocker) adopts the general design with neutral or no neutral. You can select the proper wiring method according to your electrical system construction.

This device adopts Zigbee wireless communication protocol to turn the power on/off. With the assistance of a hub, you can also control the device remotely, or link multiple devices on the app. It works with Apple HomeKit, enabling quick control of the device via the Home app.

\* This product requires a Zigbee 3.0 hub. Some features work under the support of some specific hubs, please check the detailed device list at: [www.aqara.com/support](http://www.aqara.com/support).



This button is a wireless mini switch, and you can set up its automation on the app.

### Button

Double click quickly and then long press for 5s:  
restoring factory settings

Short press 3 times quickly:  
verification of effective communication distance

### Touch bar

Its automated operation can be set up on the app.

You can control the device by sliding, single-clicking, double-clicking, and long pressing.

Note: The quadruple rocker version is a 3-way relay, and the 4th rocker is a wireless switch.

## Safety Reminder

1. Since the installation process of this product involves strong current, only the professional personnel are allowed to install the product according to the national electrical code and User Manual;
2. This product is only for indoor use. Please do not use it in a humid or outdoor environment;
3. Pay attention to moisture-proof, do not spill water or other liquids on this product;
4. Do not place this product near heat sources;
5. Please do not try to repair this product by yourself, and the work should be done by authorized professionals;
6. Please do not scratch the surface of buttons with sharp objects.

## User Instructions

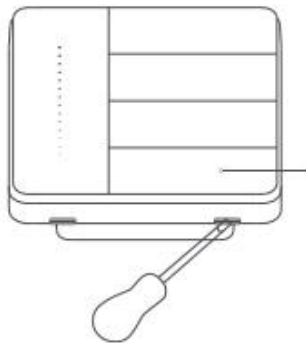
The Works with Apple logo means that the accessory has been designed to work with the technology identified in the badge and has been certified by the developer to meet Apple performance standards. Apple is not responsible for the operation of this product or its compliance with safety standards.

## Installation Methods

Using Wall Switch Z1 Pro (Quadruple Rockers) as an example.

⚠ Please make sure the main power is shut off before installation!

❶ Pry off the switch panel with a slot-type screwdriver;

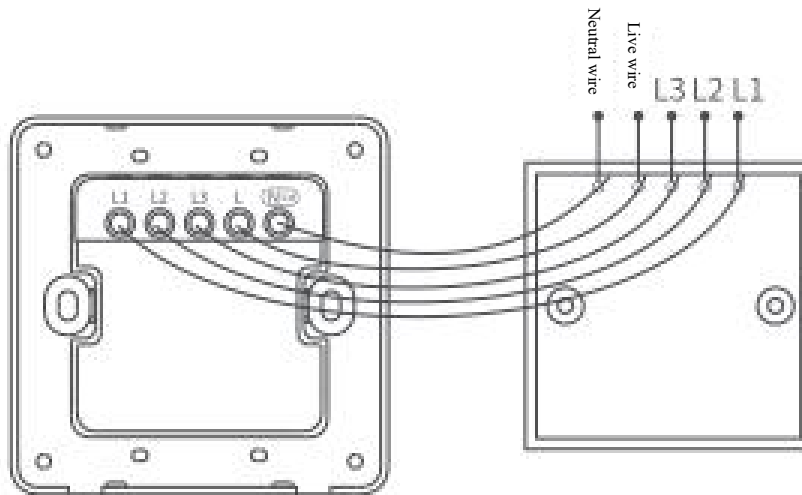


This button is a wireless mini switch, and you can set up its automated operation on the app.

② Loosen the screws on the wiring terminals of the switch with a screwdriver. Insert the live wire into the L hole, and insert the neutral wire into the N hole (You may keep the N hole unconnected if there is no neutral wire available in your house). Connect the load (the light) to L1, L2 and L3 holes correctly, and tighten the screws on binding posts. The total load should not exceed 2,200 W.

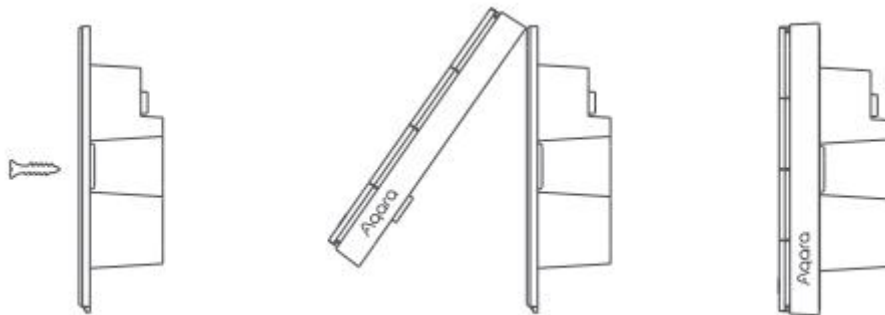
\* The L3 hole is only available in models of triple/quadruple rockers, and the L2 hole is available in models of double/triple/quadruple rockers.

You may remain the N hole unconnected if there is no neutral wire available in your house



③ Mount the switch on the junction box on the wall with provided screws, and then snap on the switch panel. Make sure to follow the fastening methods to install the panel and the base.

\* Torque should not exceed 0.7 N•m.

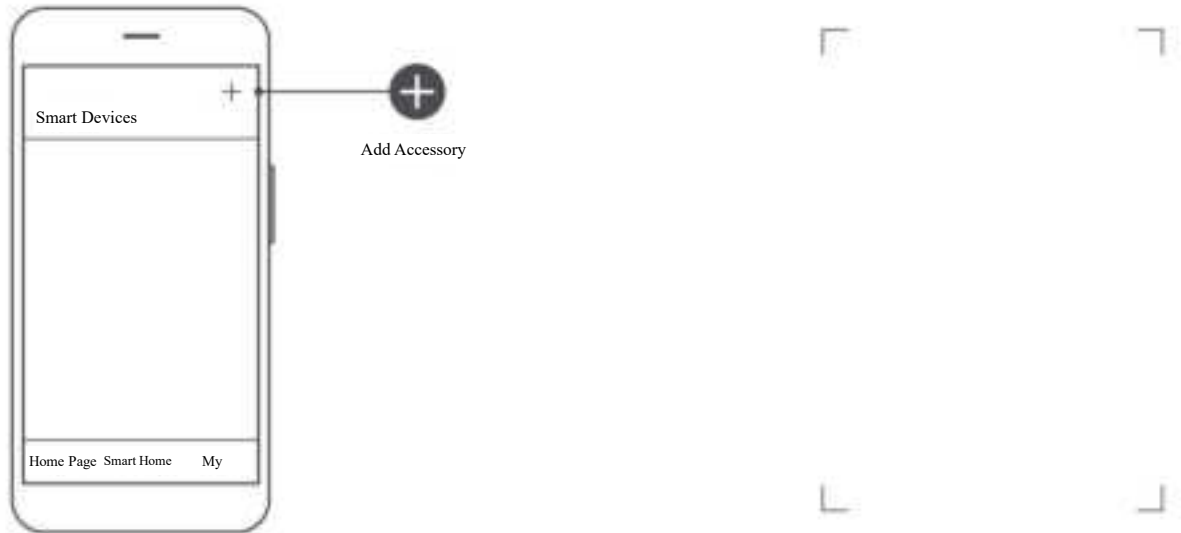


④ Connect the main switch of the power supply, and press a button on the switch panel. If the light can be turned on and off manually, the switch works normally.

## Quick Settings

### Aqara Home Mode





1. Please follow the User Manual of the hub to add the hub to the app;
2. Open the app, and tap "+" on the top right corner of Home Page to enter the page of "Add Device (Accessory)". Select Wall Switch Z1 Pro (Single/Double/Triple/Quadruple Rockers), and follow the prompts to complete the next steps.



\* If the device fails to be added, please move the device close to the hub and try again.

Verification of Effective Distance: Quickly press any button on the switch relay 3 times, and the hub beeps, indicating that the device and the hub can communicate effectively with each other.

## Product Specifications

Version	Single Rocker	Double Rockers	Triple Rockers	Quadruple Rockers
Model	ZNQBKG42LM	ZNQBKG43LM	ZNQBKG44LM	ZNQBKG45LM
Dimensions	86 × 86 × 33.5 mm			
Wireless Protocol	Zigbee			
Rated Parameters	220 V~, 50 Hz			
Number of Light Control Channel(s)	1	2	3	4
Rated Load	Incandescent lamps: ≤ 2,200 W (all circuits); energy-saving lamps, LED lamps, and fluorescent lamps: ≤ 400 W (all circuits), μ			
Minimum Load	Min 3 W (no neutral); no limit (with neutral)			
Type of Load	Incandescent lamps  Energy-saving lamps  LED lamps  Fluorescent lamps 			
Operating Temperature	-10 °C ~ 40 °C			
Operating Humidity	0 ~ 95% RH, no condensation			
Standards	GB/T 16915.1-2014, GB/T 16915.2-2012			

\*Please read this manual carefully and keep it properly.

Manufacturer: Lumi United Technology Co., Ltd.

Address: Room 801-804, Building 1, Chongwen Park, Nanshan iPark, No. 3370, Liuxian Avenue, Fuguang Community, Taoyuan Residential District, Nanshan District, Shenzhen, China

Online Customer Service:: [www.aqara.com/support](http://www.aqara.com/support)

Service Hotline: 400-990-7930

## Name and Content of Hazardous Substances

Component name	Hazardous Substances					
	(Pb)	(Hg)	(Cd)	(Cr (VI))	(PBB)	(PBDE)
Plastic components	○	○	○	○	○	○
Electronic component	×	○	○	○	○	○
Metal Wiring Terminal	×	○	○	○	○	○
PCB	○	○	○	○	○	○
Other hardware	○	○	○	○	○	○

This table is prepared in accordance with SJ/T 11364 (Electronic Industry Standard of the People's Republic of China).

○: Means that the content of the hazardous substance in all homogeneous materials of the component is under the limit specified in GB/T26572.

×: Means that the content of the hazardous substance in at least one homogeneous material of the component exceeds the limit specified in GB/T26572.



## Warranty

We provide warranty services of repair, replacement and refund for this product in strict accordance with the *Law of the People's Republic of China on the Protection of Consumer Rights and Interests* and *Law of The People's Republic of China on Product Quality*. The services are as follows:

### Warranty Policy

Within the validity period of the three-guarantee of (Return, Replacement, and Repair Services), you can enjoy the services of return, replacement and maintenance free of charge in accordance with the provisions. Return, replacement and repair shall be handled with invoices.

1. Unconditional return of the goods (through an e-commerce platform) within 7 days after the day of date of receipt is allowable, and the logistic expenses shall be borne by the users.

2. In case of any performance failure listed in the *Product Performance Failure Table*, the following services can be provided free of charge after being detected and determined by the after-sales service center.

Service Types	Service Description
Return	Return due to product quality within 7 days from the day after date of receipt.
Replacement	Replacement due to product quality within 15 days from the day after date of receipt.
Repair	Repair due to product quality within 1 year from the day after date of receipt

Note: We suggest keeping the packing box for at least 30 days from the day after acknowledging receipt, as the packing box is required to ensure the transportation safety of the product during the transportation process.



## Product Performance Failure Table

Name	Performance failure
Wall Switch Z1 Pro (Single/Double/Triple/Quadruple Rockers)	<ol style="list-style-type: none"><li>1. Surface damage due to structural or material factors</li><li>2. Indicator light failure</li><li>3. Button failure</li><li>4. Zigbee connection failure</li><li>5. Switch control function failure</li></ol>

### Non-warranty Regulations

1. Unauthorized repair, misuse, collision, negligence, abuse, infusion, accident, alteration and improper use of non-product accessories, or torn and altered labels and anti-counterfeiting marks;
2. Expiry of the warranty services of return, replacement and repair;
3. Any damage caused by force majeure;
4. Any failure that does not conform to the *List of Product Performance Failures*;
5. Performance failure of this product or its parts written in the *List of Product Performance Failures* caused by human factors.

### Instructions for Micro-power Device

(I) The Zigbee technology of this product meets the technical requirements of Class F devices for general micro-power devices in the List and Technical Requirements of Micro-power (Short-range) Radio Transmission Devices, and is a good solution to data transmission. Integrated antennas are adopted. Methods of control, adjustment and switching can be found in the User Manual;

- (II) Users should not change the usage scenario or service conditions, expand the transmission frequency range, increase the transmission power (including additional mounting of RF power amplifiers), or change the transmitting antennas arbitrarily;
- (III) The use of this product shall not generate any harmful interference to other legal radio stations, and the protection requirements related to the prevention of harmful interference shall not be proposed;
- (IV) It should be able to bear the interference of industrial, scientific and medical (ISM) application devices radiating the RF energy or the interference of other legal radio stations;
- (V) In case of any harmful interference to other legal radio stations, the use of it should be stopped and should not be resumed before the harmful interference is eliminated;
- (VI) For the micro-power device used in the aircraft and radio observatory, meteorological radar stations, satellite earth stations (including measurement and control, distance measurement, reception and guidance stations) and other military and civil radio stations, as well as airport and other electromagnetic environmental protection areas that are specified in laws and regulations, relevant national regulations and standards, the regulations related to electromagnetic environmental protection and regulations of relevant competent departments of the industry shall be followed;
- (VII) It is forbidden to use any model remote control within a 5,000 m-radius area with the central point of the airfield runway as the center;
- (VIII) During the use of micro-power devices, the temperature should be  $-10\text{ }^{\circ}\text{C} \sim +40\text{ }^{\circ}\text{C}$ , and the power supply should be  $220\text{ V} \sim, 50\text{ Hz}$ .